

# CXR and CT images of Covid-19 from Singapore

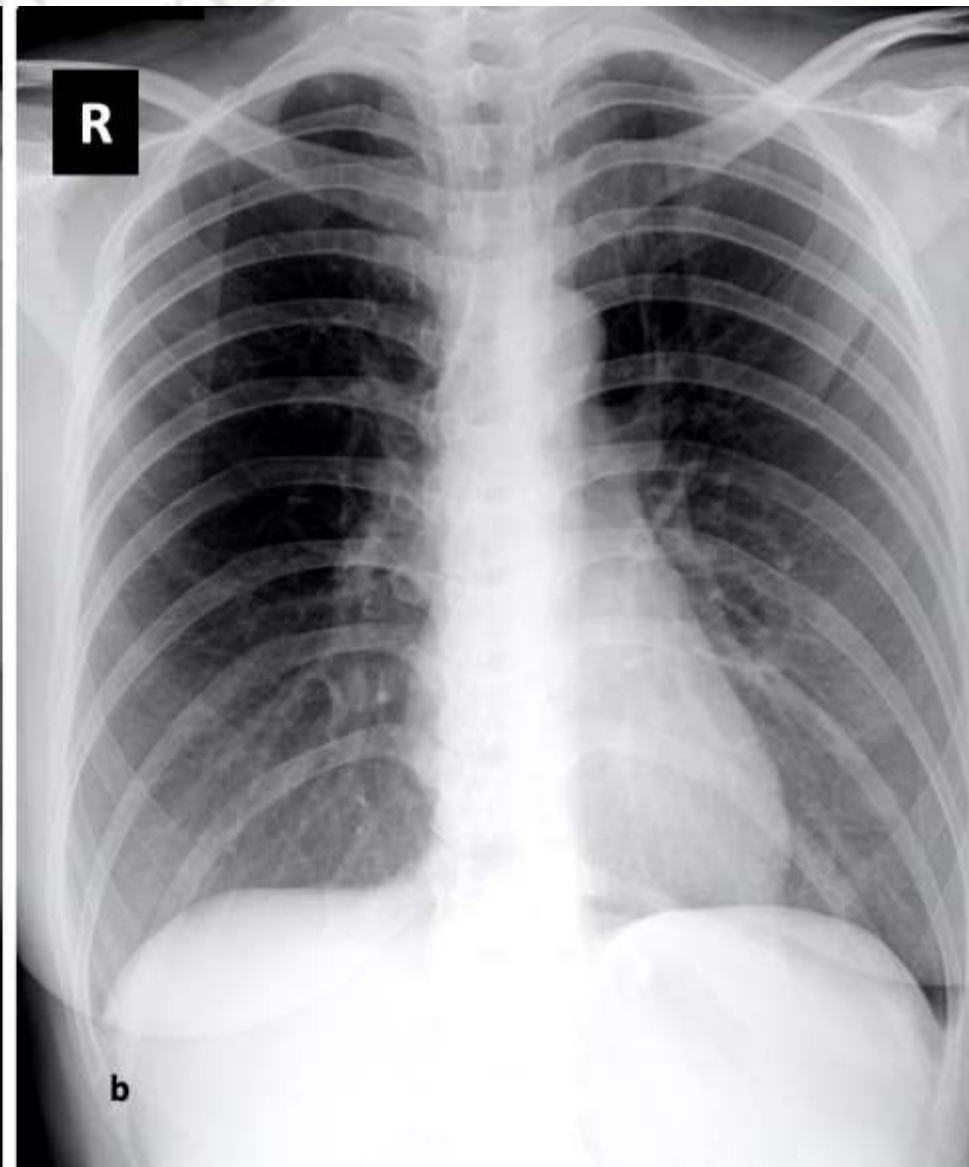
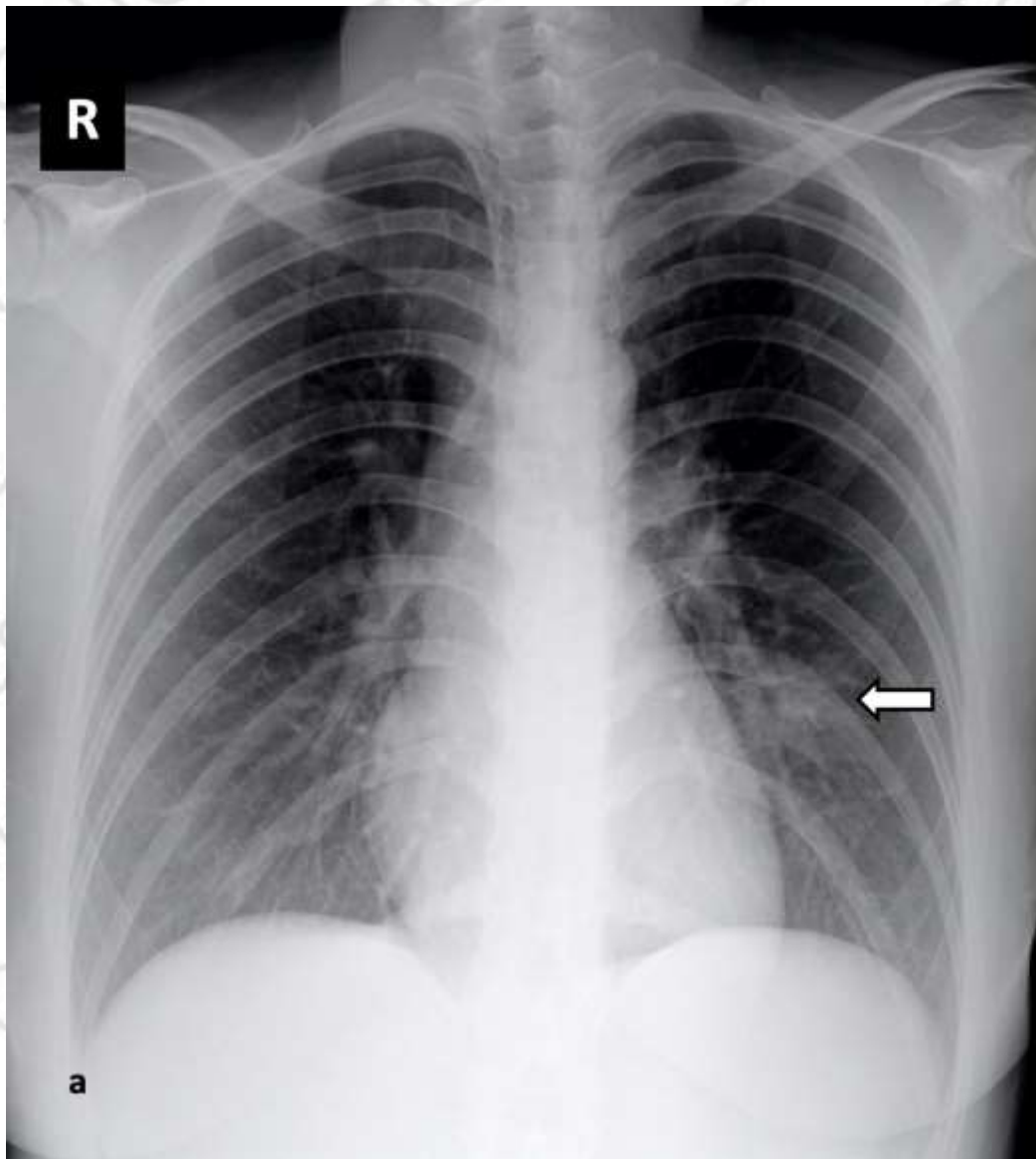


Figure 1 – Serial chest radiographs of patient who presented with fever. Initial chest radiograph (a) revealed a left infrahilar focal consolidation (arrow). Follow-up chest radiograph (b) performed 7 days later showed interval resolution. The patient was stable during admission, without need for oxygen supplementation.

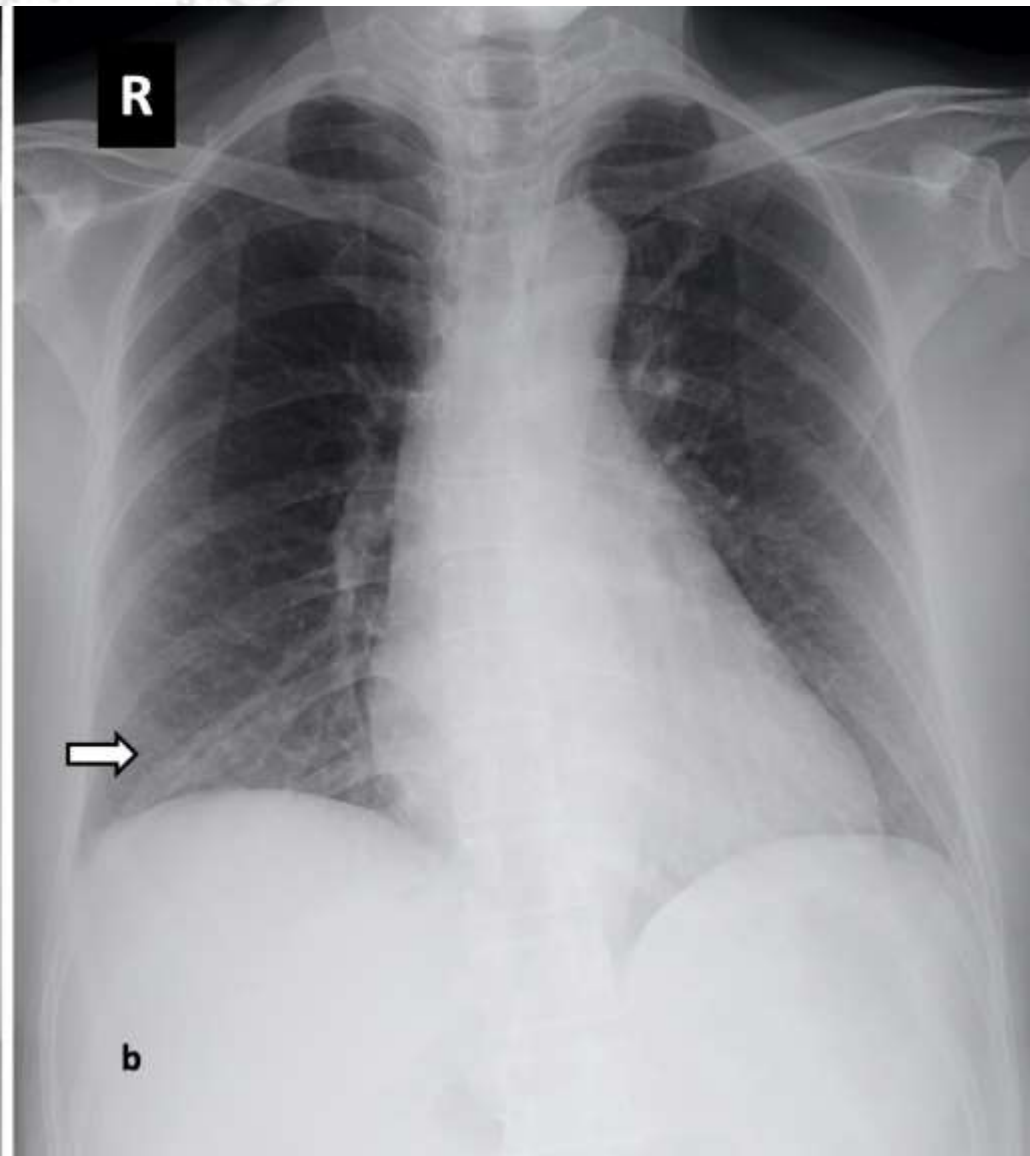
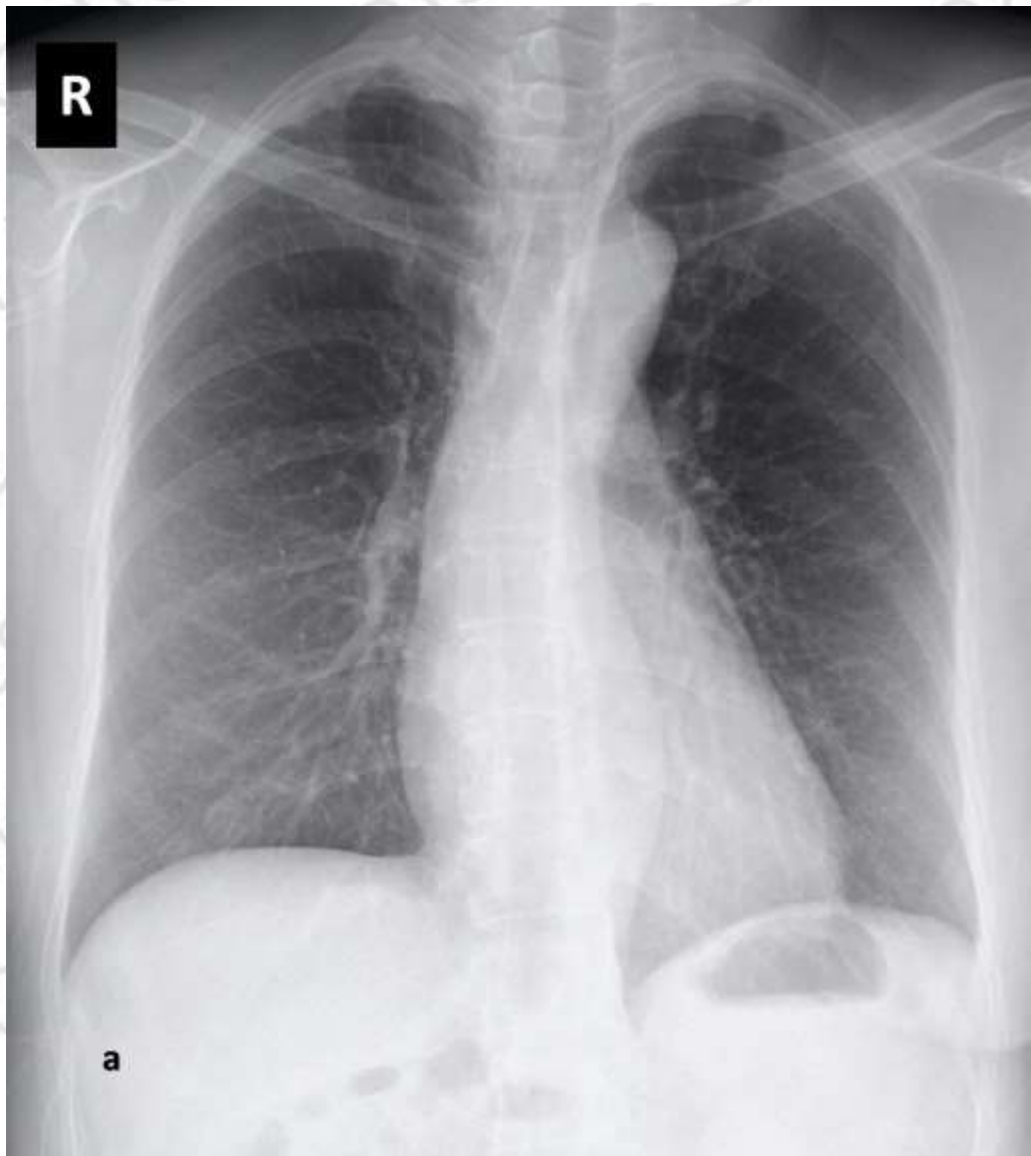


Figure 2 – Serial chest radiographs of patient who presented with fever, cough and sore throat. Initial chest radiograph (a) was normal. Follow-up chest radiograph (b) performed 10 days later showed interval development of a right lower zone ground-glass opacity. The patient was stable during admission, without requiring oxygen supplementation.

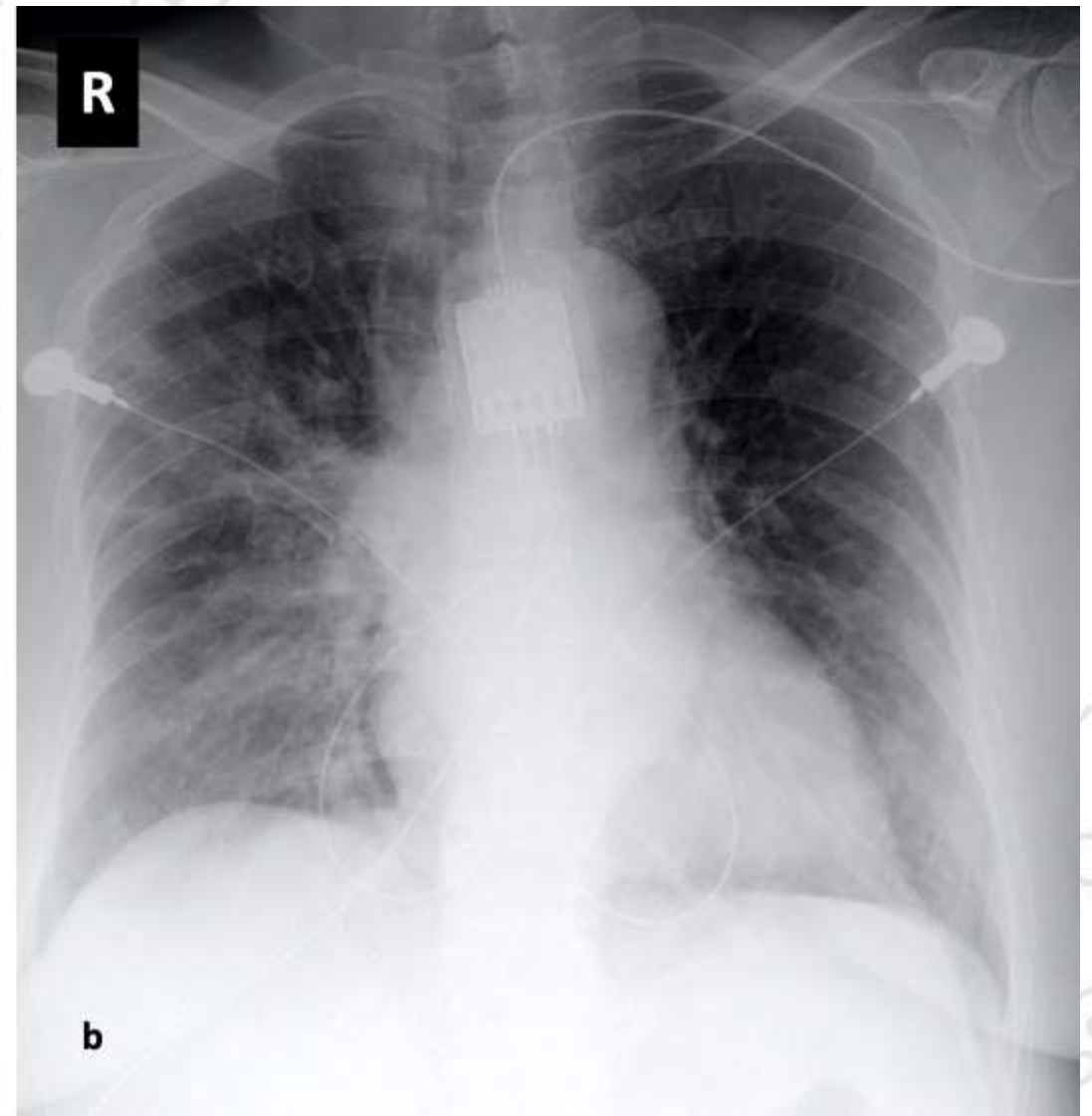
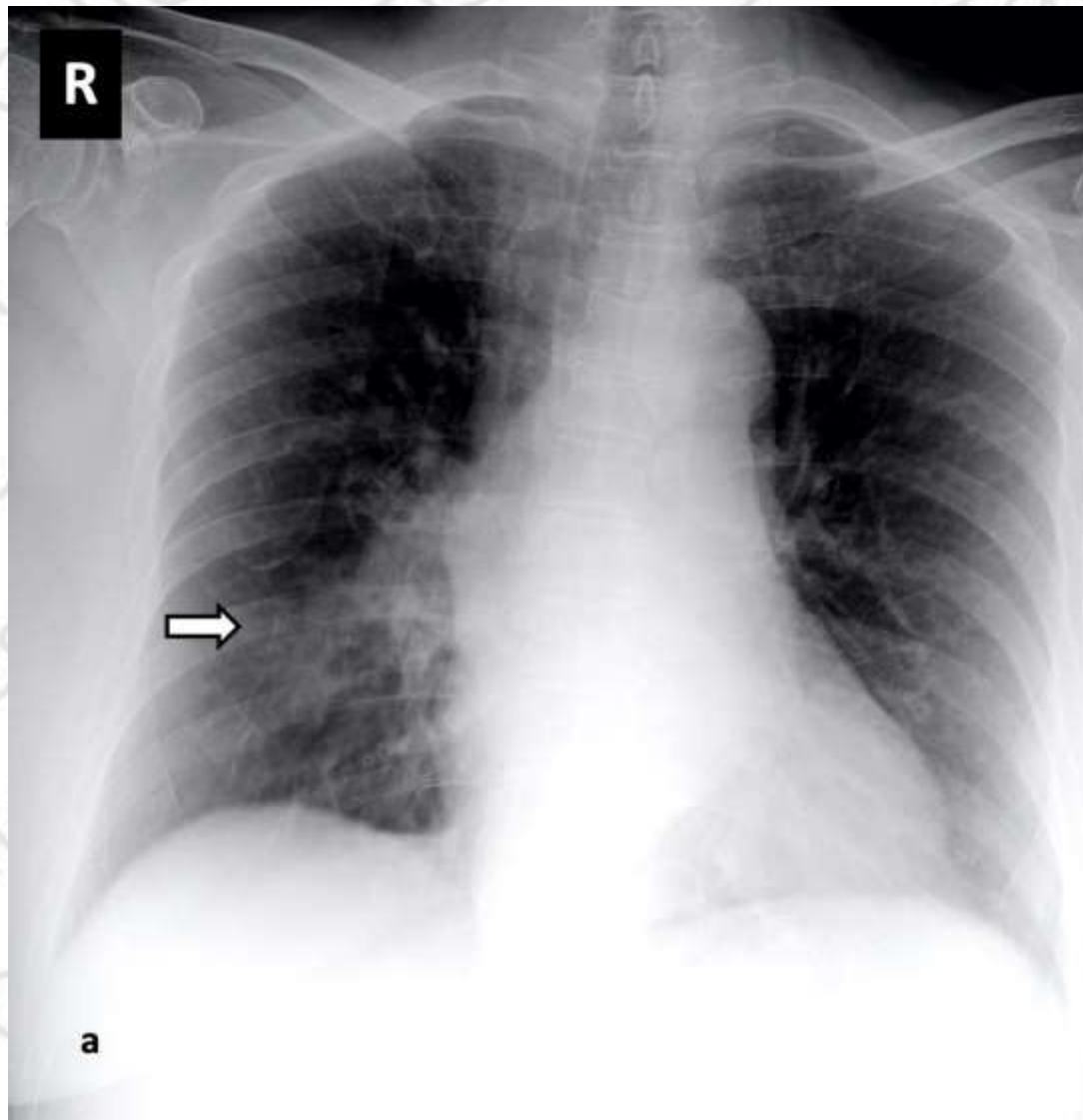


Figure 3 – Serial chest radiographs of a patient who presented with fever and cough. Initial chest radiograph (a) showed a right infrahilar focal consolidation (arrow). A follow-up radiograph (b) performed 7 days later demonstrated worsening right lung changes with predominant perihilar mixed GGO and consolidation.



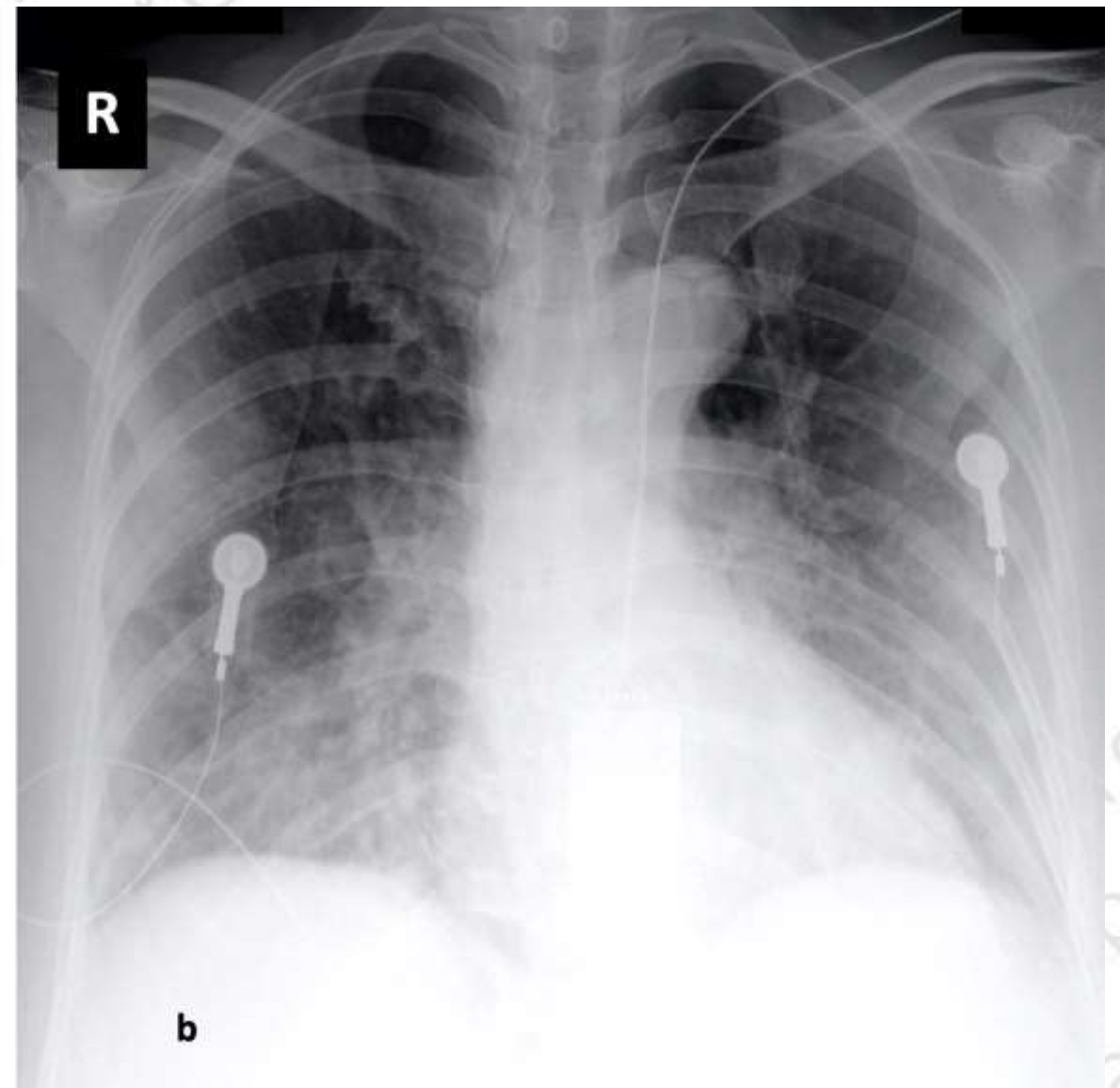
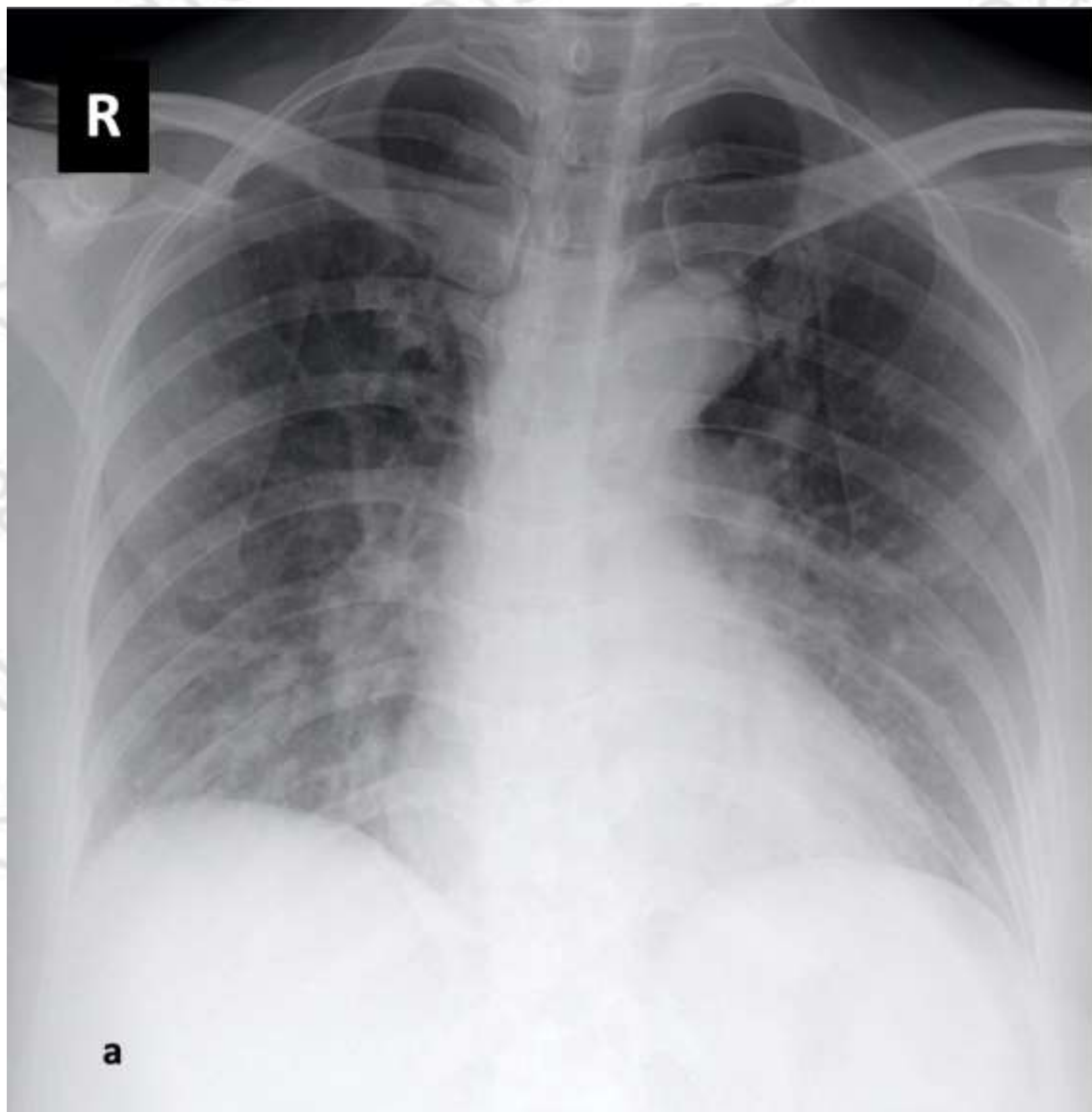
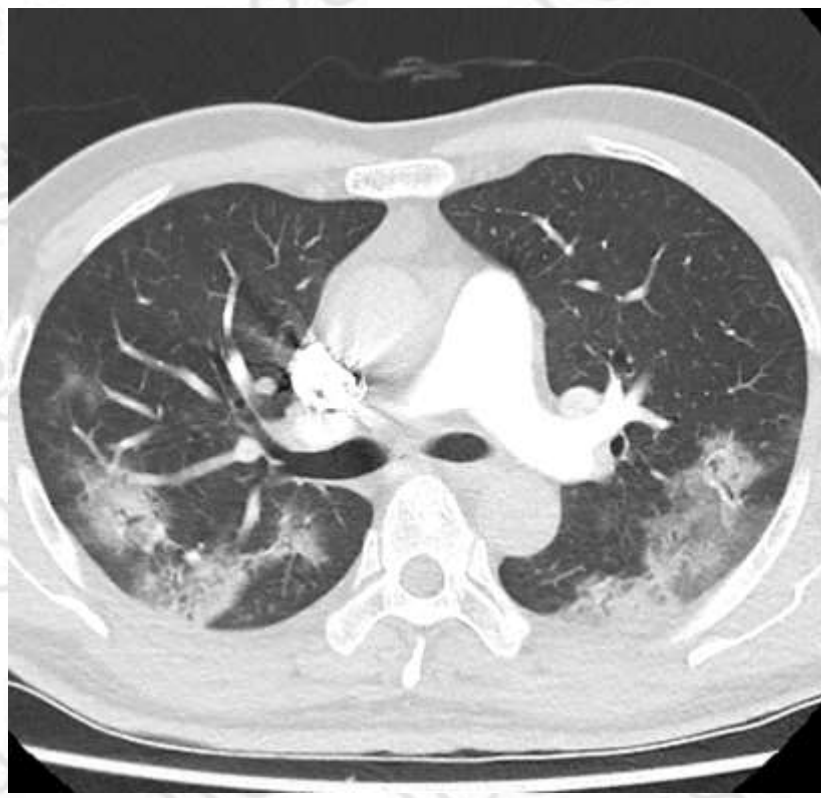


Figure 4 – Serial chest radiographs of a patient who presented with fever and cough. Initial chest radiograph (a) showed bilateral predominant perihilar consolidation. Follow-up chest radiograph (b) performed 5 days later showed interval worsening of bilateral perihilar and lower zone consolidation.



5a

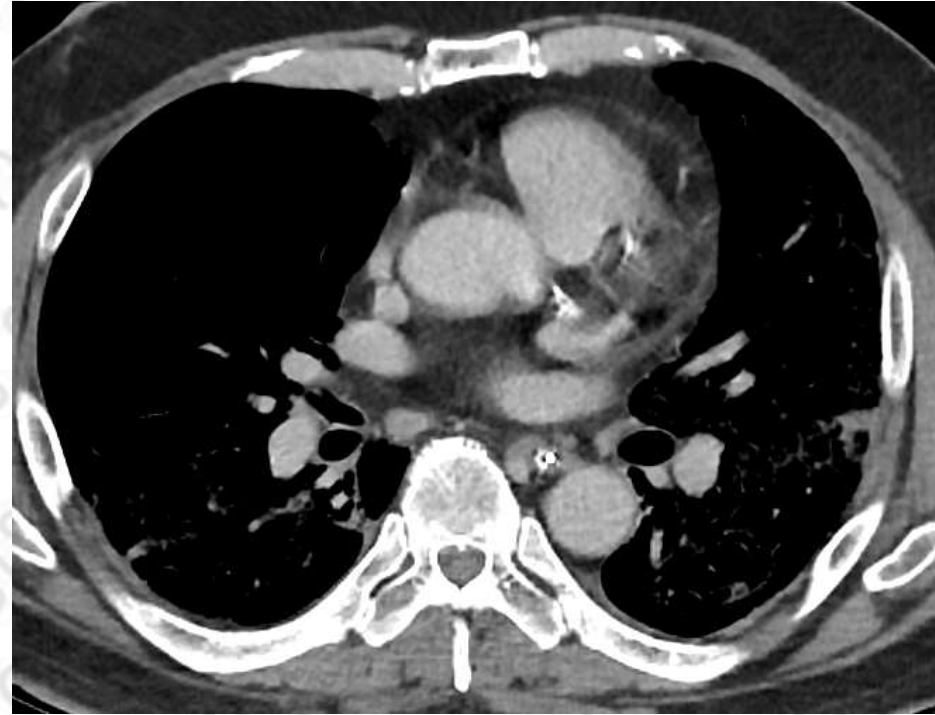
b

c

**Figure 5 a-c** CT images (lung window) showing multifocal large confluent areas of pure ground glass and smaller patchy ground glass opacities which extend from a peripheral to a central location. (a-c). There is an absence of nodules and reticular opacities.



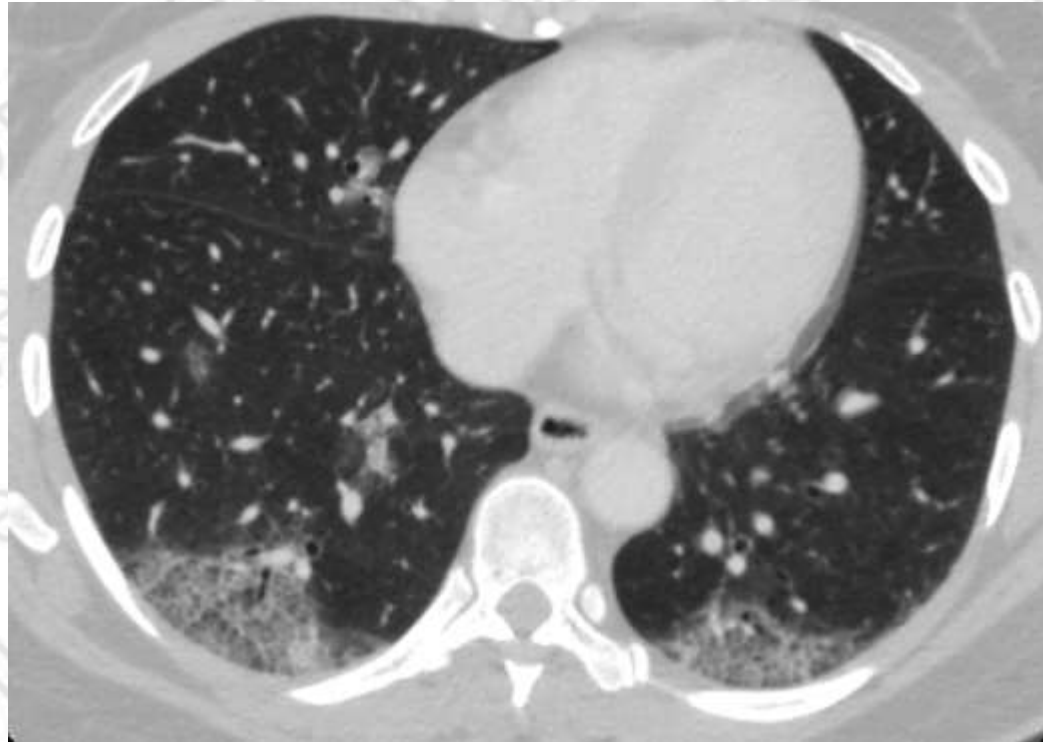
a



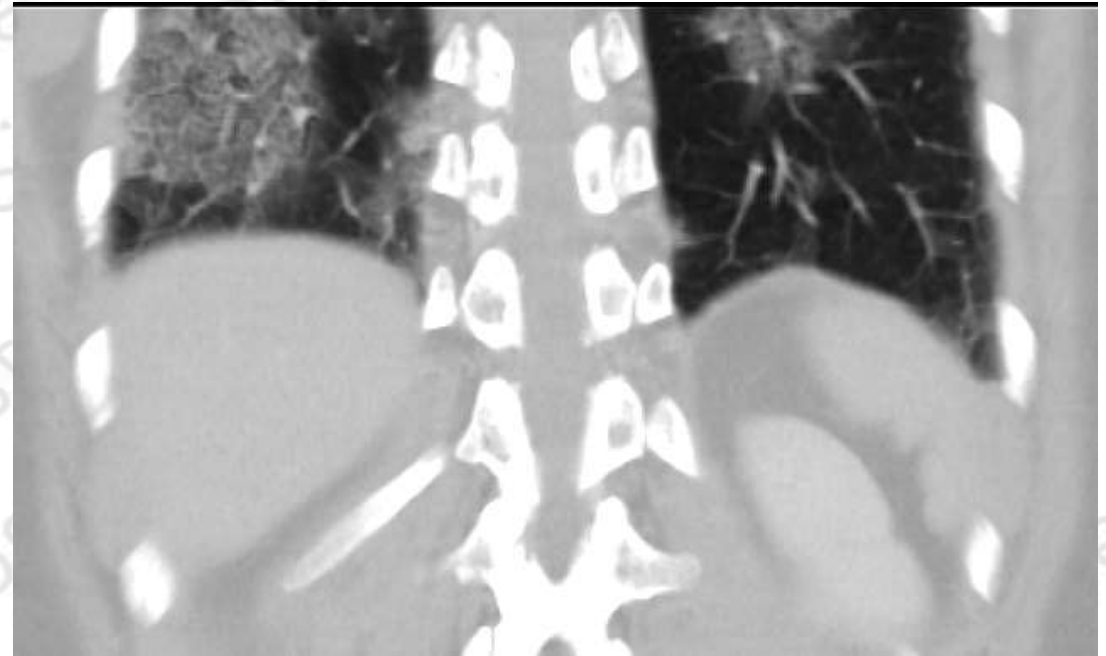
b

**Figure 6 a-b.** CT images (mediastinal window) showing an absence of thoracic nodal enlargement and an absence of pleural effusions (a-b).

# CT abdomen demonstrating Covid-19



a



b

**Figure 7a-b.** CT abdomen images (lung window) showing incidental ground glass changes in the lung bases in a confluent, subpleural crazy-paving pattern. The patient was confirmed to have Covid-19 (a-b).



College of Radiologists Singapore